

KOBELCO

LONG REACH ATTACHMENT

SK210_{LC}

■ Max. Digging Reach: 15,820 mm ■ Digging Depth: 12,010 mm

SK260_{LC}

■ Max. Digging Reach: 18,530 mm ■ Digging Depth: 14,730 mm

Reaches Further and Deeper with Smooth, Stable Power

- Ideally suited to dredging, leveling, and other long reach operations.
- Fuel-efficient diesel engine provides plenty of digging power.

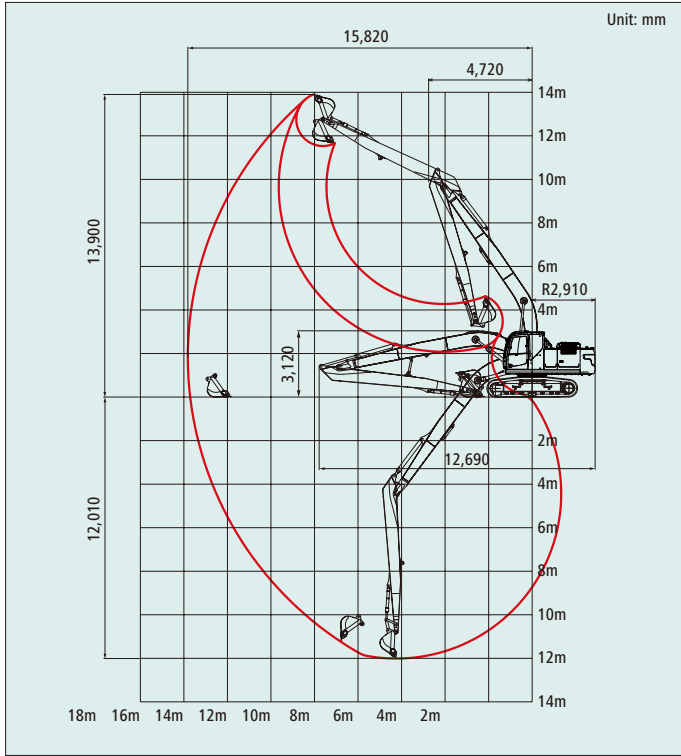


We Save You Fuel
Achieving a Low-Carbon Society

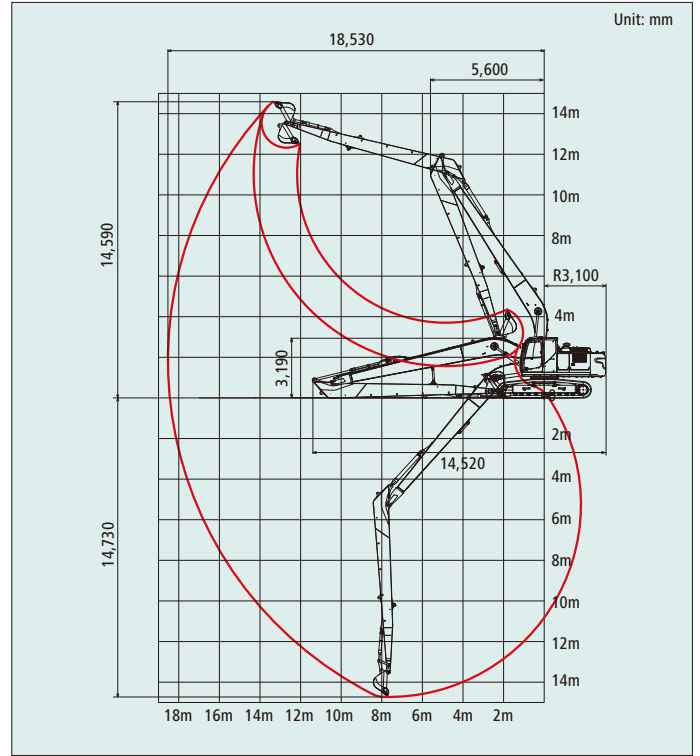
LONG REACH ATTACHMENT

WORKING RANGES

SK210_{LC}



SK260_{LC}



MAIN SPECIFICATIONS

Model	SK210LC	SK260LC
Type	SK210LC-10	SK260LC-10
Long reach attachment	50 ft	60 ft
Bucket capacity ISO heaped	m ³ 0.45	0.4
Operating weight	kg 22,500	26,900
Ground pressure	kPa 47	53
Swing speed	min ⁻¹ 13.3	10.2
Travel speed	km/h 6.0/3.6	5.8/3.6
Gradeability	% (°) 70 (35)	70 (35)
Boom length	mm 8,750	10,350
Arm length	mm 6,350	8,250
Max. digging reach	mm 15,820	18,530
Max. digging height	mm 13,900	14,590
Max. digging depth	mm 12,010	14,730
Shoe width	mm 600	600
Overall height	mm 3,120	3,190
Overall length	mm 12,690	14,520

KOBELCO CONSTRUCTION MACHINERY CO., LTD.

5-15, Kitashinagawa 5-chome, Shinagawa-ku, Tokyo 141-8626 JAPAN
 Tel: +81 (0) 3-5789-2146 Fax: +81 (0) 3-5789-2135
www.kobelco-kenki.co.jp/english_index.html

Inquiries To: